



## **0 scale Miners Cabin**



This kit is for  
adults.  
**NOT A TOY.**  
Contains  
small parts

Thank you for purchasing KHM's Miners Cabin. We hope you will enjoy the build, as well as the completed model. Company-built cabins were used extensively throughout the USA and Canada for logging, mining and construction projects. This freelance design has an approx. 6.5" x 3.5" footprint.

### **Painting/staining**

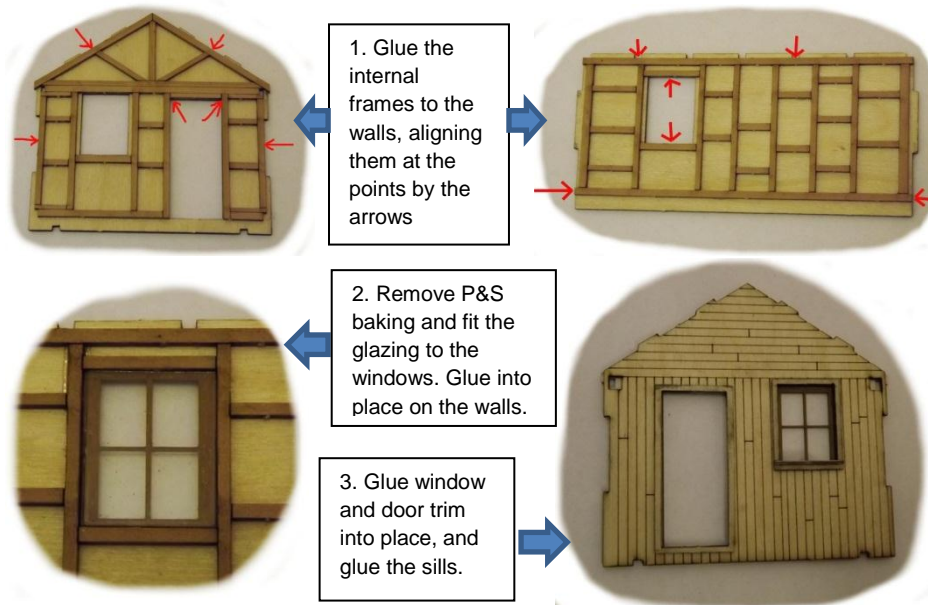
Parts can be painted or stained while still on the carrier boards, but you may find it easier if you paint the walls as complete sections before they are assembled. For the instruction photos I left painting until the end for clarity.

### **Removing parts from carriers**

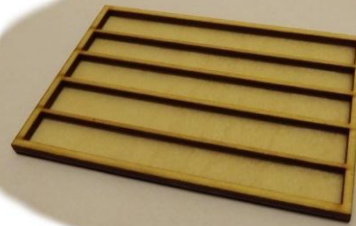
Use a new blade and take care. While we have part-cut through the retaining tabs, the remaining wood can still be hard. Please don't twist out any of the parts – they will get damaged. Leaving the parts in the carriers until needed will help identification and reduce chance of losing pieces.

### **Glue**

DO NOT USE WHITE GLUE. Cyno Acrylate (Super glue) or contact adhesive is suitable.



4. Glue the floor to the floor frame, ensuring the edges line up.



5. Glue 2 walls and floor together. Note how the internal frames sit on the floor, and the tab and slot interlock at the corners.



6. Glue the other 2 walls into place.



7. fit door frames to both sides of the door (scribe planking on the reverse side of the door if your desire). Glue door into place. Add a track pin as a door knob (not included)



8. Glue gable strips in place along the roof line, then fit the P&S corner trim: add the trim to the side walls first, flush with the ends, then add the strips on the end walls. Note how on the porch end the gable and corner strips go around the square recess.



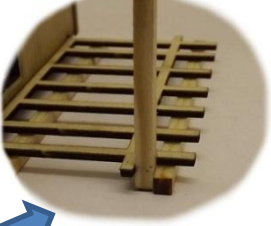


9. Porch parts:-  
2 top beams (pine)  
2 porch posts (pine)  
7 floor supports (pine)  
Porch floor (birch ply)  
12 planks (basswood)

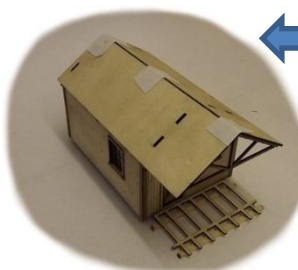
10. Glue 5 floor supports to the cabin



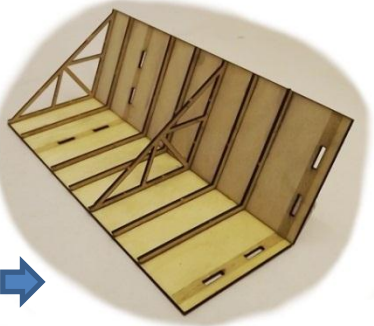
11. Glue 2 floor supports to the porch floor, and fix the floor in place on the end wall, locating tabs into slots. NOTE the spacing needs to allow porch posts to fit.

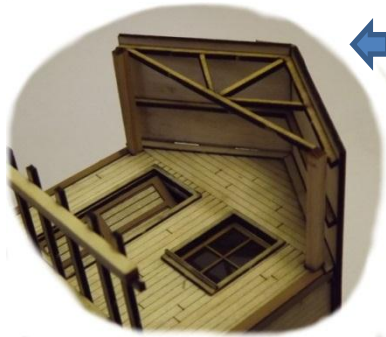


12. Fit A frames to one roof panel. NOTE the engraved ridge markers showing the ridge edge.



13. Tape the other roof panel in place and check fit. Then glue the rafters and A frame in place. You now have a removable roof 😊





14. Glue the top porch beams into place locating them in the square holes



15. Glue the porch posts into place



16. Add the porch planks in place



17. Shingle the roof (instructions with shingles)



18. Smokestack options. It's useful to make a jig out of scrap wood. (Stove from interior kit)



**COMPLETE!**  
Why not buy the interior kit? 50% off when purchased with the Miners Cabin.

